

Rotate cover bluetooth Wireless Keyboard

BT-102KB

User Guide

Before connecting the keyboard to your device, please make sure your device has built in bluetooth transmitting module, and has either one of the following operating system : Windows 7 / Windows XP (Service Pack 2 or above) / Windows Vista / iOS / Android.

【Keyboard front view / hot key definition】



1. Some of the keys allow combination input, you would have to use FN key together with the relevant key to make combination input.
2. To make combination input (to input char in the square) , please press the FN key together with the relevant key at same time. For example, please press "FN" key together with ">." key to input "Alt". Combination keys include, command, Alt, ->, <- , F1, F11, F12, F4, F5, F6, F7, F8, F9, and F10.
3. Delete key serves the same function as backspace key.

【Keyboard back view / power switch and connect button】



● Is The Connect Button.



■ Is The Power Switch.

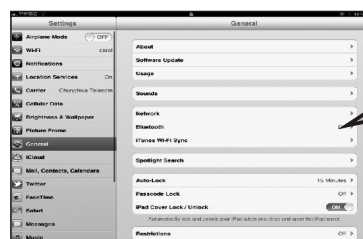
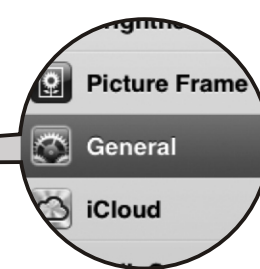
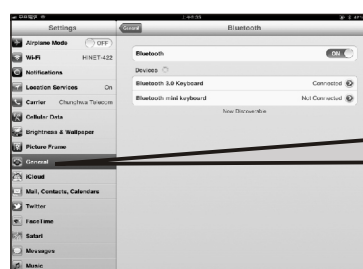
【Bluetooth keyboard pairing procedure on iPad】



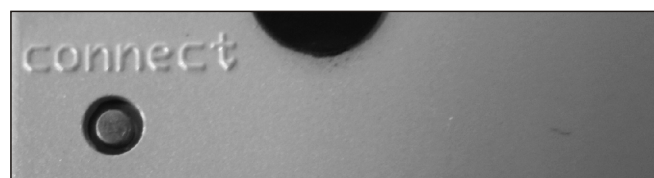
- 1 Insert alkaline batteries into the battery tray, and close the battery lid. Please be aware of battery direction.



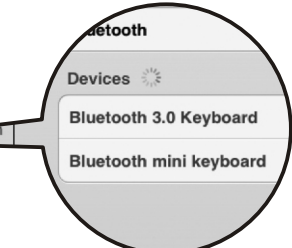
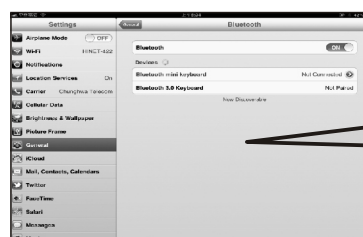
- 2 Turn on the keyboard power by sliding the power switch to the right, then on your iPad screen, please tap on the setting icon.



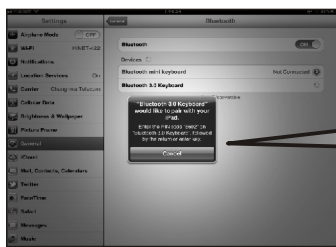
- 3 After entering the setting, please tap on the general setting of the left column, then tap on the Bluetooth device on the right column. Please make sure bluetooth device is set to "ON", your iPad will begin to search for available bluetooth device.



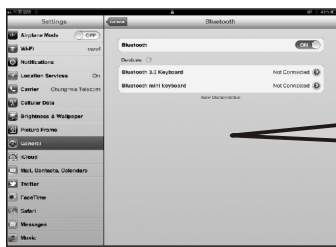
- 4 Press the connect button of your bluetooth keyboard to begin pairing. The LED indicator will begin flashing.



- 5 On your iPad search screen, you will see a "Bluetooth 3.0 keyboard" device, please tap the device, your iPad will start to pair up with the keyboard.



※Each pairing PIN CODE is different



- 6 iPad will ask you to enter a default selected pin code. Please follow the instruction and enter the relevant pin code from the keyboard follow by "enter, return" key. If the connection has been successfully set up, it will appear that the keyboard device is connected.

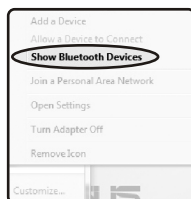
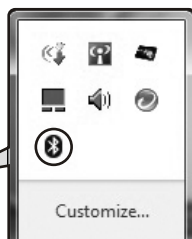
【Bluetooth keyboard pairing procedure on Windows 7】



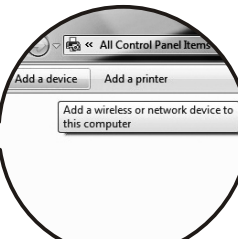
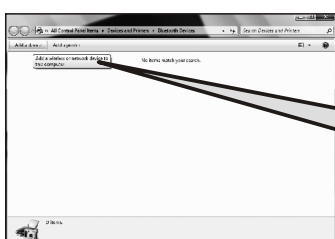
- 1 Insert alkaline batteries into the battery tray, and close the battery lid. Please be aware of battery direction.



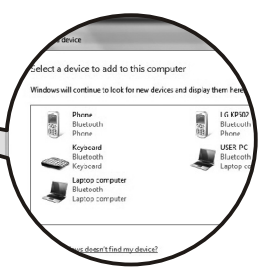
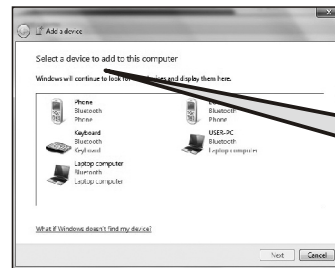
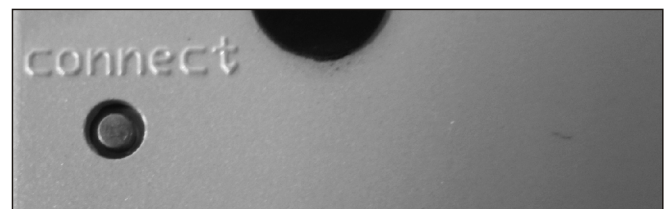
- 2 Turn on the keyboard power by sliding the power switch to the right. Please see direction of power indicator.



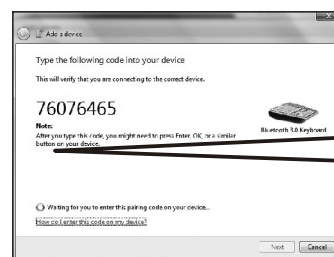
- 3 After starting the computer, please select and click on the bluetooth icon from your lower right screen. You may also find this "bluetooth devices" icon from your control panel.



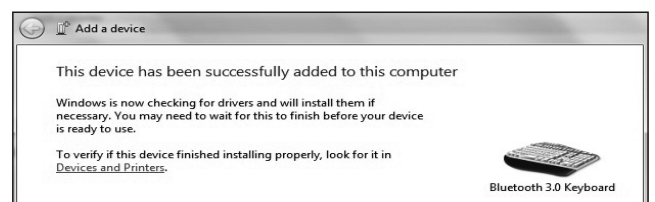
- 4 Please select add a "add a device" from the device window, and a "add a device" window will show up.



- 5 The computer will begin to search for available bluetooth device. Simply press the connect button from back side of your keyboard to begin pairing. On your screen, please select "Bluetooth 3.0 keyboard" device, and click on next step with your mouse.



※Each pairing PIN CODE is different



- 6 System will pop up a window asking you to enter a (8 digits) pin code from your keyboard follow by "Enter, return" key. Please enter the relevant pin code from your keyboard and press "enter, return" key to establish wireless connection. It will appear on the screen that the bluetooth keyboard has been successfully added to your system.

Trouble Shooting:

1. Before use of this bluetooth keyboard, please make sure that the connected smart phone has the HID (Human Interface Device) profile installed, and make sure the operating system supports Android 2.3.6 ~4.0 or above, iOS 4.0 or above. If the connected smart phone does not have the above mentioned HID profile installed, please download suitable bluetooth keyboard driver from Apple App store or Google Play. (For mid or entry level smart phones, bluetooth keyboard maybe able to connect with the devices, but user may need to download and install additional bluetooth keyboard driver for keyboard to work properly).
2. This bluetooth keyboard has been tested to work with most advance smart phones, such as Galaxy SII, Galaxy SIII, Galaxy Note, iPhone 3GS, iPhone 4, iPhone 4S, or HTC One X. HID profiles have already been pre-installed on these smart phones. Therefore, users do not need to download additional bluetooth keyboard driver to make the keyboard work. Otherwise, downloading and installing additional bluetooth keyboard driver is necessary to make the keyboard work.
3. Before use of this bluetooth keyboard, please make sure to use Alkaline batteries, verify batteries' power, and turn on the keyboard power switch.
4. This is not a multi-pairing bluetooth keyboard, and can only be connected to a single device one at a time. If the keyboard has been successfully paired up with device A, keyboard does not need to be paired up again for every time use. However, if the keyboard is paired up with device B, the previous stored bluetooth ID with device A will be erased, and pairing is necessary for keyboard to work with device A again.
5. To make combination input (to input char in the square), please press the FN key and relevant key at same time to input char in the square.
6. If the device is not connected successfully, do not panic, please repeat above mentioned pairing procedures, or check the trouble shooting guideline.